



WHAT HAS BEEN CHANGED?



# Retail Shelf Planner 2010 – Service Pack 1

WHAT HAS CHANGED?



# Retail Shelf Planner 2010 – Service Pack 1

WHAT HAS BEEN CHANGED?

## **Author's note**

Every possible effort has been made to ensure that the information contained in this white paper is accurate at the time of publishing, and the author can't accept responsibility for any errors or omissions, however caused. No responsibility for loss or damage occasioned to any person acting, or refraining from action, as a result of the material in this publication can be accepted by the author.

Copyright © Global Retail Business Solutions Ltd. All rights reserved.





WHAT HAS BEEN CHANGED?

## Introduction

Despite our efforts to ensure the **Retail Shelf Planner** software works as designed and is as simple to use as possible, we discovered some things that we believed can be done better after the software was released to market. This is often the result of the wide range of technical environments the software is exposed to in “real life”, increased insights on our side, and feedback from the users.

We have combined a number of enhancements to the software in a Service Pack. This document will describe them, so that you have a good idea of what has changed.

We trust that this document and Service Pack will allow you to get even more out of **Retail Shelf Planner** and are ready to answer any questions you may have after reading it. Send them to [info@planograms.eu](mailto:info@planograms.eu) and we'll get back to you as soon as possible.

Erwin Bergsma  
*Managing Director*





## Enhancements

### User Interface

We've updated the look & feel of Help-About screen to make registration details easier to read.

The Print and Print Preview menus were always available. They are now disabled if there is no section.

The section dialog would enable the OK button if the ID and all dimensions were filled in, but this check would only be done after leaving the fields. The check is now done immediately when typing in the values, so that the user can go directly to the OK button without first having to click in another field.

The product dialog would enable the OK button if the ID and the dimensions were filled in, but this check would only be done after leaving the fields. The check is now done immediately when typing in the values, so that the user can go directly to the OK button without first having to click in another field.

The message informing the user about the number of new and updated products after an import has been updated to include a space between the text and the numbers for better readability.

The Tool-Options dialog has been enhanced so that:

- ✓ The tabs and all fields are now easily navigated with the Tab-key.
- ✓ The Default Planogram Path can no longer be manually changed, avoiding typing errors.

Three issues have been identified with the "Delete Planograms From Database" form:

- ✓ The form didn't remember its location.
- ✓ The filters Department and Merchandise Group didn't update the list of available planograms.
- ✓ The OK button was enabled even though no planograms had been selected for deletion.

All issues have been fixed.

The product dialog would enable the OK button if the dimensions were filled in, even though the ID was empty. The button is now only enabled if ID, Height, Width and Depth are all filled in.

Several dialogs didn't remember their last location:

- ✓ The Product dialog.
- ✓ The Supply Chain dialog.
- ✓ The Apply Trends dialog.
- ✓ The Page Setup dialog.

They now all will be positioned at the location they were when last closed with OK

Various enhancements have been implemented for the Position dialog:

- ✓ The column-widths in the lists with Available Products and Selected Products in the Position dialog are fixed to ensure correct operation. However, in previous releases they could be resized by double-clicking in the split between the headers. This now has been corrected.
- ✓ In the situation where a planogram had a large number of products, there was a significant delay in displaying the dialog. Various performance improvements have been implemented to ensure quick response and proper feedback to the user.
- ✓ In certain cases the schematic display of the products on the shelf / hanging bar was still displayed even if that part of the dialog was hidden. This has been resolved.

The menu-option Tools-Recalc Location Numbers was enabled even when there were no positions to process. This has been corrected.



## WHAT HAS BEEN CHANGED?

### Enhancements, continued

#### Planogram Display & Output

When the menu-option Show Merchandising Areas has been selected, the red dotted lines indicating the Max Merch areas are now drawn after everything else, so that they appear in front of the positions and are always visible.

In a situation where the system was running low on memory, Retail Shelf Planner could crash when zooming in too much. This has been fixed. In the rare situation that this occurs, a proper error message is now given.

After printing the planogram, dragging products sometimes was non-responsive or picked up another product than the one visually below the cursor. This has been corrected.

#### Analysis & Reporting

The calculation of GPROII in the evaluations dialog has been updated for better results on aggregated levels.

Three enhancements have been done to Excel reporting:

- ✓ When creating the reports Excel is hidden to avoid problems with the user switching between spreadsheets which may result in incorrect reports.
- ✓ After the creation of the report Excel is forced to be maximized and the active window, so that the user can immediately use the report.
- ✓ When a planogram had a large number of products, the creation of a report could take a while. A new approach has been implemented to reduce the time required by up to 90%.

Various issues have been identified with the Highlight Characteristic Analysis:

- ✓ When using the “All criteria have to be met” setting the results were not always correct.
- ✓ The “All criteria have to be met” setting was not restored when the Highlighting dialog was loaded.
- ✓ The selected values for criteria 2 and 3 were not restored correctly when the Highlighting dialog was loaded.

All issues have been fixed.

The results from the Apply Trends feature were not added to the Undo/Redo information. This has been corrected.

Various improvements have been implemented for Evaluations and the Evaluations dialog:

- ✓ Saved Evaluations were not deleted when closing a planogram and thus would appear with the next planogram. This has been fixed.
- ✓ The Evaluations dialog didn't remember the setting for “Compare with”. It would always select the previous evaluation. This has been fixed.
- ✓ While working with a planogram with a large number of products, there was a delay in displaying the dialog. Its overall responsiveness has been improved and the busy-cursor provides better feedback to the user that the system is performing calculations.
- ✓ When the value for a node at category or subcategory level in the tree was “<Undefined>”, the evaluation would display zeros instead of the summarized values for all products that fell under that category / subcategory. This has been fixed.

Feedback to the user has improved by showing the busy-cursor when performing the required calculations for the selected Highlight.





## Enhancements, continued

### Loading & Saving Files

Various enhancements have been done to deal with pln-files that are missing certain fields:

- ✓ If a pln-file doesn't contain the field Unit\_Movement, Movement would be set to zero. The pln-loader has been enhanced to calculate Movement based on the fields Reg\_Movement and Movement\_Basis in that case.
- ✓ If a pln-file doesn't contain the Unit\_Cost, Cost would be set to zero. The pln-loader has been enhanced to calculate Cost based on the fields Cost and Cost\_Basis in that case.

When a pln-format file was loaded, File-Save or clicking the Save-button on the toolbar would result in the file being overwritten in rsp-format. This has been changed so that a pln-file format planogram is considered a new planogram and the user is prompted for a filename.

When importing product data with the option to only update existing products, the update stopped once a product that didn't exist in the planogram was found in the Excel file. This has been corrected, so that all products in the Excel file are processed.

### Translations

The French translation of the visual stock analysis used the French word for "Target" or "Objective" instead of "Stock". The latter is more to the point about what the analysis does, so the translation has been changed to use the word "Stock".

Message 127 (error when loading Spaceman file) was missing from the French language file. This message now has been added to the language file.

In the Dutch translation

- ✓ The Tools menu has been renamed to Extra, which is more in line with the terminology used by other software in Dutch.
- ✓ The product field ID has been renamed to Art.Nr, which is a better description of what that field is used for.

### Miscellaneous

Two potential issues have been identified with the Remove Unused Products feature:

- ✓ Menus and toolbar were not refreshed, which could lead to menus and buttons being available when not applicable.
- ✓ Highlight colors were recalculated, but the planogram not redrawn, which could lead to incorrect colors displayed if unallocated products had to be included in the calculations.

All issues have been fixed.

In certain situations Retail Shelf Planner displayed old section details even after changes had been made in the section dialog. This has been fixed.

The Highlighting options remained active after starting a new planogram with File-New. As this is potentially confusing (when placing products you're not seeing the colors you might expect) Highlighting is now automatically switched off when starting a new planogram.

We've included various additional and updated planograms as well as a sample product import spreadsheet in the Samples directory.



## WHAT HAS BEEN CHANGED?

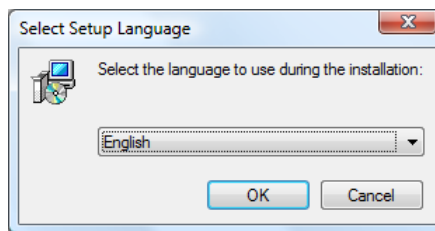
### Installing Service Pack 1

A special setup is available to update existing installations of **Retail Shelf Planner**: RSP2010SP1Update.exe. This setup requires that a previous version of the software has been installed. If that's not the case, the setup will warn you and cancel the installation.

The update install will respect all existing settings and doesn't require you to re-register afterwards.

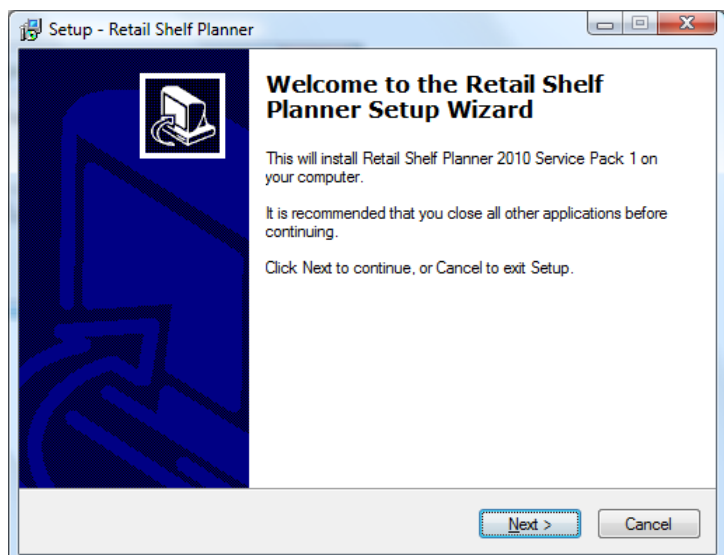
You will be guided through the installation with 5 screens:

In screen 1 you select the language used for the screens during the installation. You can choose between English (the default setting), French or Dutch.



Screen 2 welcomes you and recommends that you close all other applications before continuing.

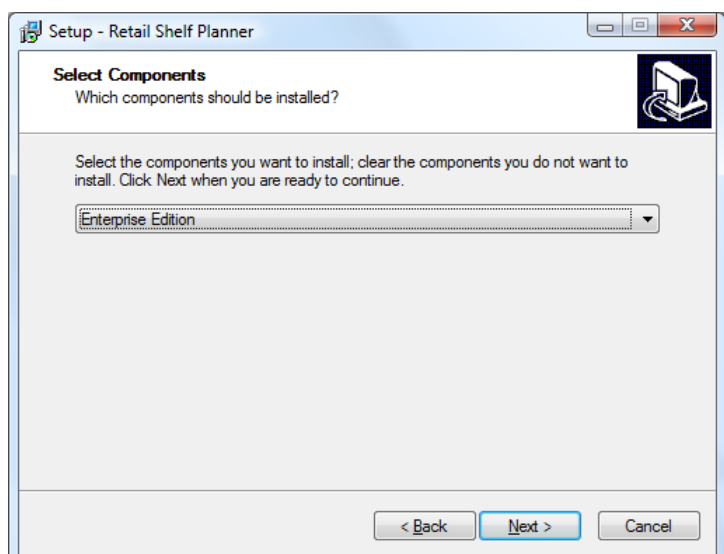
Note that it is especially important that you have closed **Retail Shelf Planner**, otherwise it will not be possible to replace the application executable.



Screen 3 requires you to select the version of the **Retail Shelf Planner** software you have.

If you're not sure if you have the Express or Enterprise edition, you can check that via the splash screen on startup, or via the Help-About dialog.

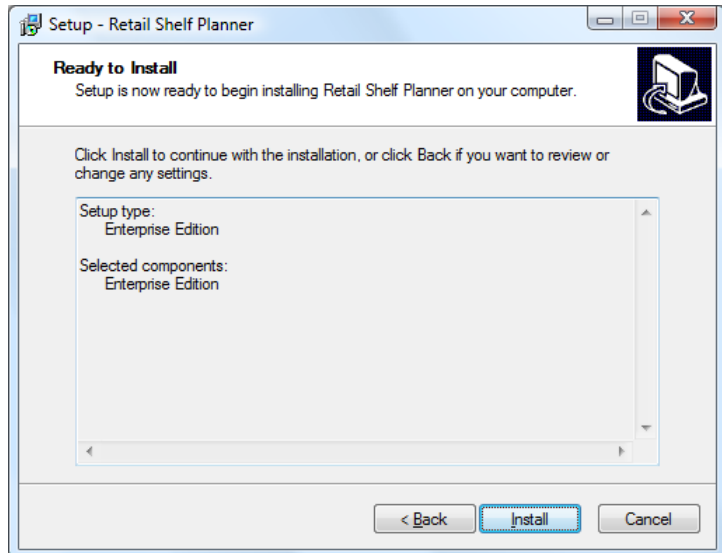
Installing the correct version is important, as an incorrectly installed version will not work.



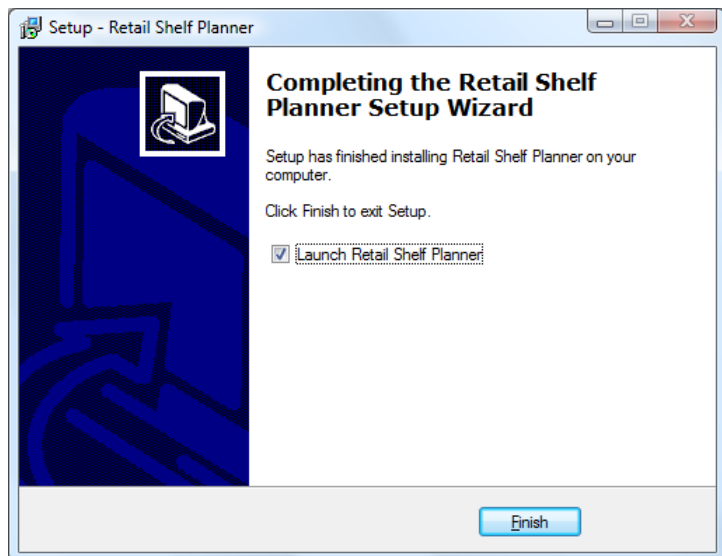


### Installing Service Pack 1, continued

Screen 4 shows you the selected version as the last overview before the actual install.



After the installation the setup confirms its completion and offers you the option to start **Retail Shelf Planner**.



# Retail Shelf Planner 2010 – Service Pack 1



WHAT HAS BEEN CHANGED?



# Retail Shelf Planner 2010 – Service Pack 1

WHAT HAS BEEN CHANGED?

**Global Retail Business Solutions** is a Belgium based company with 20 years of experience in data analysis, Category Management, assortment-, floor- and space-planning. Our software and services are delivered directly and through partners to companies around the globe.

In those 20 years we worked with hundreds of local and international retailers and suppliers in Food and Non-Food, guiding them in the implementation and successful use of specific software applications supporting their sales, marketing, buying and merchandising departments.

For more information, contact:

## Europe

### **Global Retail Business Solutions**

Grez-Doiceau  
Belgium  
Phone: +32-479-290.351  
Email: [info@planograms.eu](mailto:info@planograms.eu)

## Asia

### **MIAdvisory**

Bangkok  
Thailand  
Phone: +66-2-634.5498  
Email: [info@miadvisory.com](mailto:info@miadvisory.com)

Or visit one of the **Retail Shelf Planner** websites:

[www.planograms.eu](http://www.planograms.eu) / [www.schappenplannen.nl](http://www.schappenplannen.nl) / [www.schappenplannen.be](http://www.schappenplannen.be)

