



RSP 2010 – Other New Features

This document lists all other new features in the Retail Shelf Planner 2010 release that are not covered by the following documents:

Retail Shelf Planner 2010 – New Merchandising Options

Retail Shelf Planner 2010 - Planogram Database

Retail Shelf Planner 2010 – Saving RSP planograms in pln-file format

Force Minimum

With this feature, the user can assign the right number of facings to all products on the fixture.

The feature is available through the Analysis menu.

The following process is applied:

1. If the product has no facings, it will be ignored.
2. If the product is located in one position the number of facings is calculated using the following formula: $\text{Required Units} / (\text{Total Units} / \text{Total Facings})$. The result is rounded up to the next whole number.
3. If the product is located in more than one position:
 - All positions are given 1 horizontal facing.
 - If the required shelf inventory is not yet met, Retail Shelf Planner cycles through all the positions for this product, adding one facing at the time.
 - After updating a position, the actual units on shelf is checked vs. the required units. If the required units is met or exceeded, the remaining positions are ignored.
 - Positions are processed based on their location in the section, first from bottom to top, within that from left to right. (For Open Shelves and Hanging Bars, the Y-coordinate of the Shelf is taken. For Pegboards the Y-coordinate is calculated based on the Peg Row. The X-coordinate is taken for the left side of the position.)

Note: the vertical facings of a Pegboard position are not changed during this process.

Note: Retail Shelf Planner doesn't relocate positions on a Pegboard, so there is a possibility that positions overlap after a Force Minimum.

Note: this feature is available in the Enterprise edition only.



RSP 2010 – Other New Features, continued

Location Numbers

Taking into consideration that positions on Pegboards often are relatively small, an alternative option for the position labels has been implemented.

Available through the Tools-menu is the new feature Recalc Location Numbers. This feature will assign a sequential number to each position.

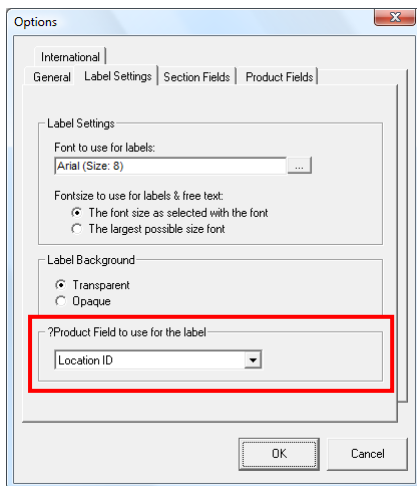
Processing is done in the following order:

- X-coordinate of the Shelf (Ascending)
- Y-coordinate of the Shelf (Descending)
- Y-coordinate of the Position (Descending)
- X-coordinate of the Position (Ascending)

For Open Shelves and Hanging Bars, the Y-coordinate of the Shelf is taken. For Pegboards the Y-coordinate is calculated based on the Peg Row. The X-coordinate of the position is taken for the left side of the position.

This approach leads to numbering by segment from top left to bottom right, except if fixtures have been defined to span multiple segments.

In the Tools-Options dialog there is a new field to choose from in the drop-down list Product Field to use for the label:





RSP 2010 – Other New Features, continued

Import Product Data

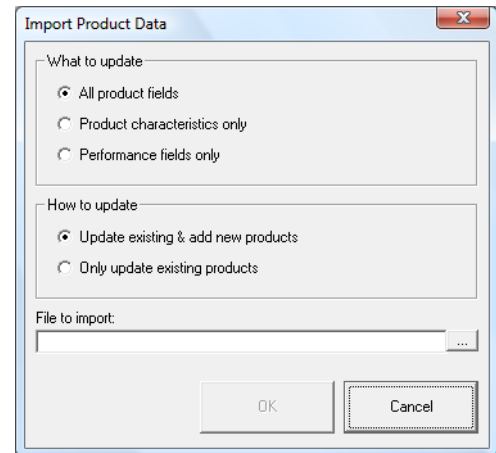
Retail Shelf Planner 2010 features more flexible capabilities for importing product data.

First, the user can select what to update:

1. All Product Fields
2. Product characteristics only
3. Performance fields only

Next, the user selects how the update should be performed

1. Update existing products and add new
2. Update existing products only



Structure of the Excel spreadsheet:

Excel column
A
B
C
D
E
F
G
H
I
J
K
L
M
N
O
P
Q
R
S
T
U
V
W
X
Y
Z
AA
AB
AC

All Product Fields
ID
UPC
Name
Supplier
Category
Subcategory
Desc1
Desc2
Desc3
Desc4
Desc5
Data1
Data2
Data3
Data4
Data5
Height
Width
Depth
Fill Color
Units per Case
Peg Vertical Offset
Price
Cost
Tax
Sales
Profit
Movement
Historical Service Level

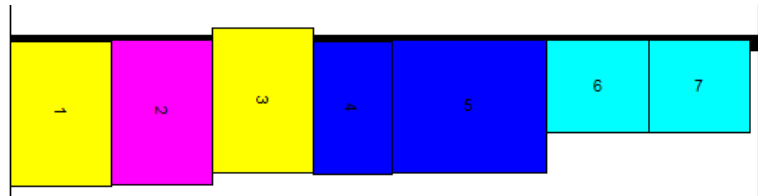
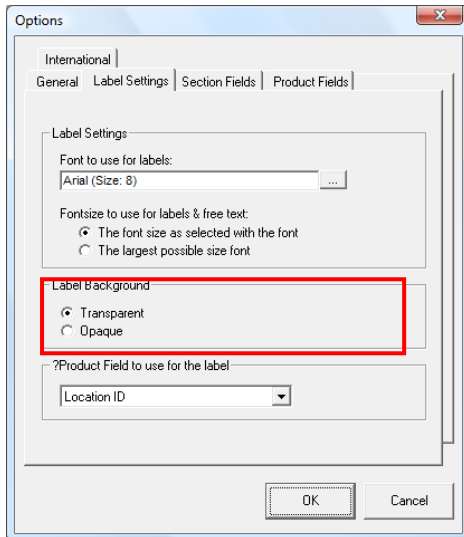
Product characteristics only
ID
UPC
Name
Supplier
Category
Subcategory
Desc1
Desc2
Desc3
Desc4
Desc5
Data1
Data2
Data3
Data4
Data5
Height
Width
Depth
Fill Color
Units per Case
Peg Vertical Offset

Performance fields only
ID
Price
Cost
Tax
Sales
Profit
Movement
Historical Service Level

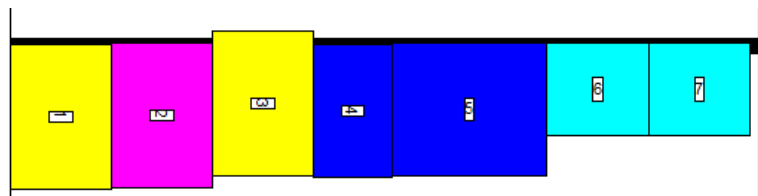
RSP 2010 – Other New Features, continued

Position Label Background

In the Tools-Options dialog on the tab Label Settings, the user can select the label background.



Label background Transparent



Label background Opaque

Changing Product ID

It is now possible to change the product ID.

Changing Product UPC

When the user changes the UPC in the product dialog and confirms this change by clicking the OK button, Retail Shelf Planner now immediately checks if the Live Image(s) for the selected UPC are loaded. If they're not, the application will attempt to load them using the normal loading scheme.

Live Images

If it finds them, Retail Shelf Planner loads additional Live Images for each product to support the various orientations and capping styles.

Filename	Orientation	Example
<UPC>.jpg	Front	5410673854001.jpg
<UPC>_L.jpg	Left	5410673854001_L.jpg
<UPC>_T.jpg	Top	5410673854001_T.jpg



Highlight dialog

It is now possible to activate the desired highlight option by double-clicking the applicable option button.