

## RSP 2010 – New Merchandising Options

Starting with release 2010, Retail Shelf Planner offers a number of new merchandising options. These are described in more detail in this document.

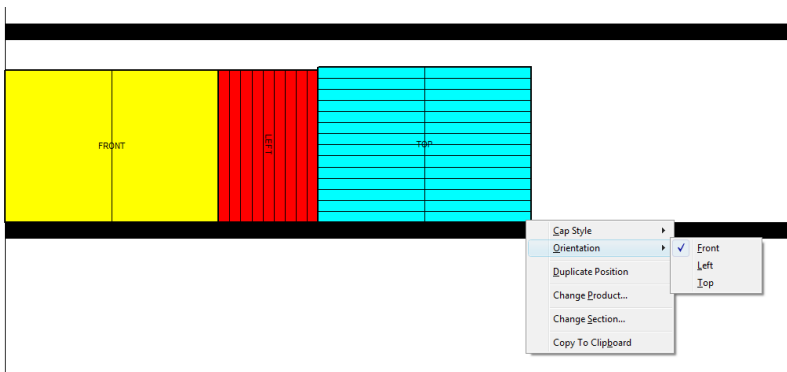
### Orientation

Accessible through the right mouse click pop-up menu, one can change the orientation of the position. There are three (3) options to choose from:

- ✓ Front
- ✓ Left
- ✓ Top

When placing a position through the Position dialog, the orientation defaults to Front.

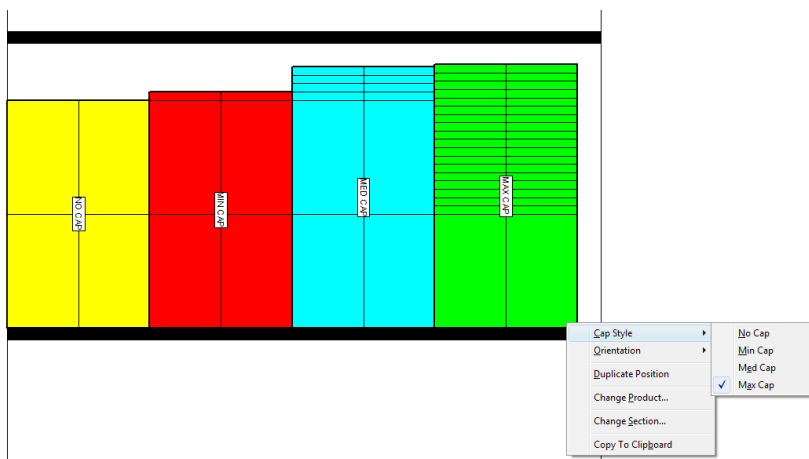
Orientation is not applicable to Pegboard and Hanging Bar positions. When a position is moved from a shelf to a Pegboard or Hanging Bar, its orientation is automatically set to Front.



### Capping Style

Accessible through the right mouse click pop-up menu, one can change the capping style of the position. This only applies to positions on Open Shelves. There are four (4) options to choose from:

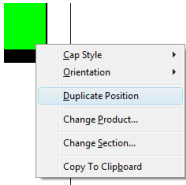
- ✓ No Cap
- ✓ Min Cap
- ✓ Med Cap
- ✓ Max Cap



## RSP 2010 – New Merchandising Options, continued

### Duplicate Position

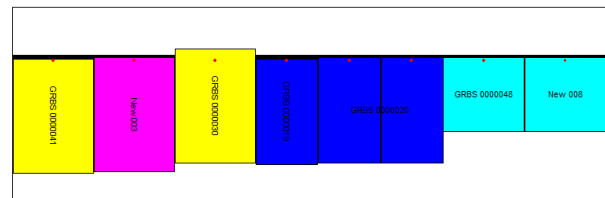
Accessible through the right mouse click pop-up menu, one can quickly duplicate the selected position. The new position will be placed to the right of the existing position on Open Shelves and Hanging Bars. On Pegboards the new position will be placed 1 peghole to the right and 1 peghole down from the original position.



### Hanging Bar

In the Shelf dialog one can select the type of fixture that is being defined. A new fixture type is Hanging Bar.

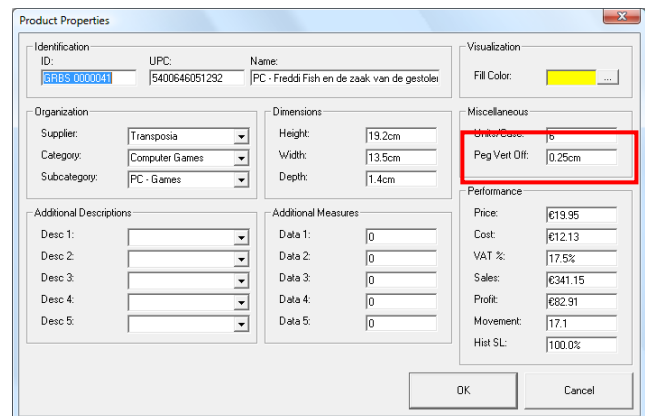
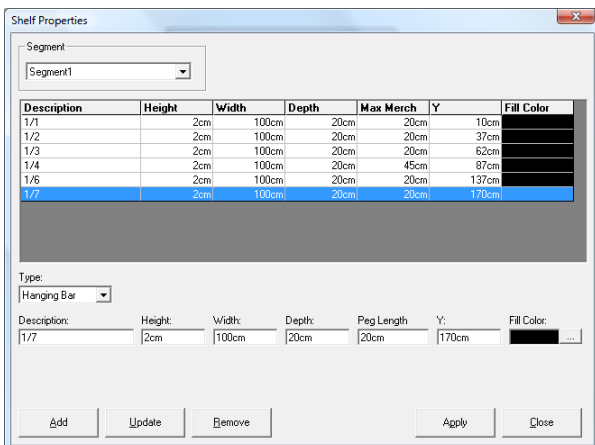
The fields required for a Hanging Bar are the same as for an Open Shelf, with the exception that the Max Merch field represents the length of the Pegs used to merchandise products on the Hanging Bar.



Positions on a Hanging Bar behave the same way as positions on an Open Shelf. They either all slide to the left, or are spread equally across the Hanging Bar if the Spread Products option in the View menu is checked.

The center of the peg is aligned with the vertical center of the Hanging Bar.

The peg hole in the product is centered horizontally. The vertical location is defined from the top of the product through the new product-field Peg Vert Off (short for Peg Vertical Offset).







## RSP 2010 – New Merchandising Options, continued

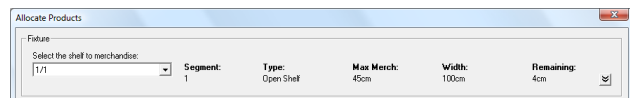
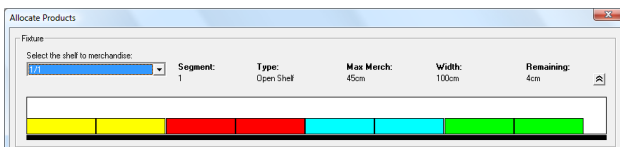
### Changing Facings

As a result of the implementation of Pegboards, it is now also possible to change the facings on Open Shelves and Hanging Bars using the ← and → keys.

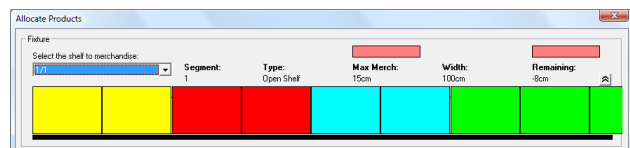
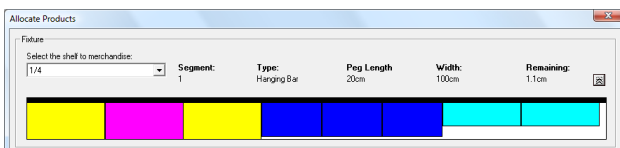
### Position Dialog

A series of changes to the Position dialog have been implemented to make it easier to use and support the new Hanging Bar and Pegboard fixtures.

For Open Shelves and Hanging Bars Retail Shelf Planner still displays a schematic while adding products to the selected fixture. If the selected fixture is a Pegboard, the schematic is hidden. Using the small button on the right just above the schematic, the drawing can be displayed or hidden to decrease the size of the dialog and allow the user to see more of the planogram.



In addition to the fixture description as displayed in the drop-down list, Retail Shelf Planner now displays additional information about the selected fixture.



When the user places products that are too high or too deep, or assigns too many facings so that products extend beyond the width of the Open Shelf or Hanging Bar, a visual warning is displayed above the variable(s) that is (are) causing a problem. These visual warnings replace the message box with warnings that was displayed in the 2009 release.

Pegboard positions are added to the top left of the Pegboard by default. If the user so desires, he can relocate the positions to the correct peg row and column using the + and – buttons above the respective columns.

