



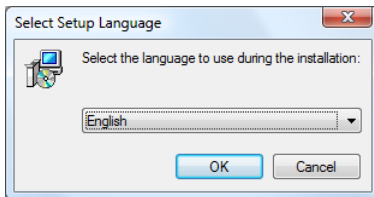
## Retail Shelf Planner 2009 – Installation instructions

Installing Retail Shelf Planner 2009 is done through a few Wizard-guided steps.

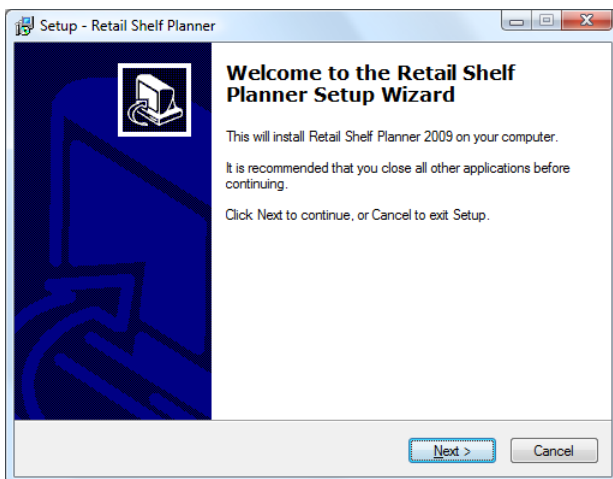
Start the installation procedure by clicking Run in the dialog from the website, or by double-clicking the saved exe-file from Windows Explorer.

### **Step 1.**

Select the language you want to use for the user interface during installation.

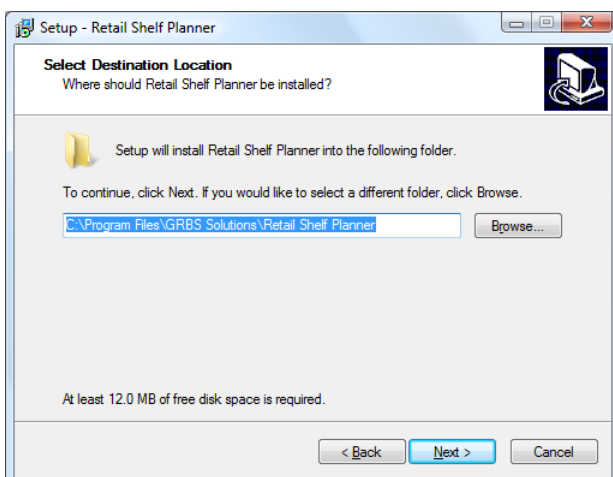


### **Step 2. The welcome screen**



### **Step 3. Destination Location**

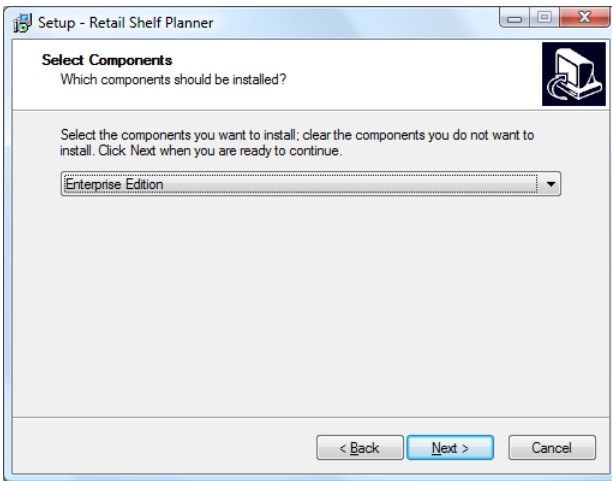
Select the location on the harddisk where you want Retail Shelf Planner to be installed. It is recommended to use the default setting.





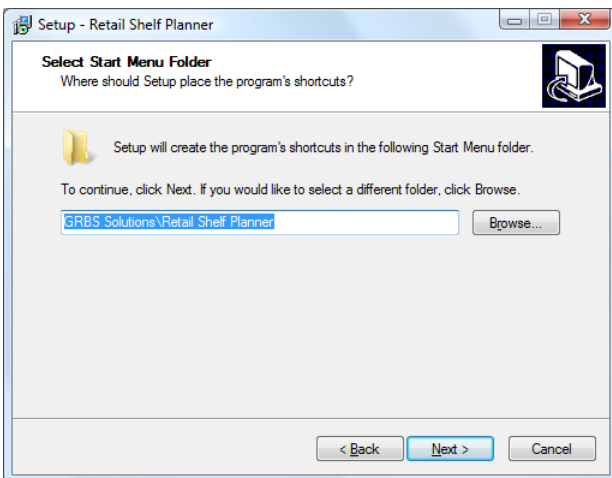
### **Step 4. Components**

Here you select which version of Retail Shelf Planner 2009 you want to install, the Enterprise edition or the Express edition.



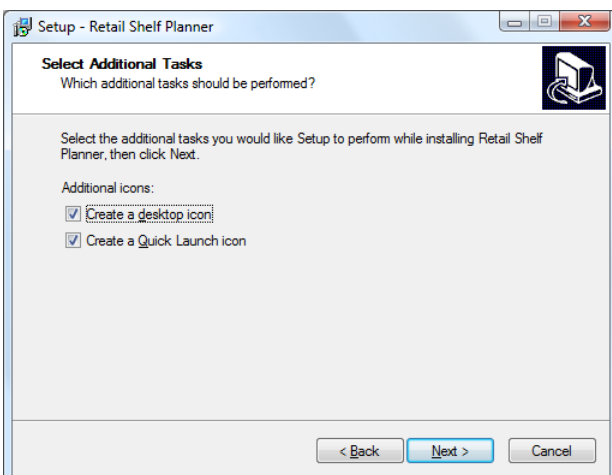
### **Step 5. Start Menu**

Enter the name of the Start Menu folder where the program's shortcuts will have to be installed. It is recommended to use the default setting.



### **Step 6. Additional Tasks**

Select the tickboxes if you want program shortcuts on your desktop and/or the Quick Launch taskbar.





**Step 7. Summary**

In the last step you'll find all your choices summarized in one overview. By clicking the Install button, you start the installation. This will take just a few minutes and doesn't require you to reboot your PC afterwards.

