

Retail Shelf Planner 2009

Improving Productivity &
Planogram Quality



Section 1.

IMPROVING PRODUCTIVITY



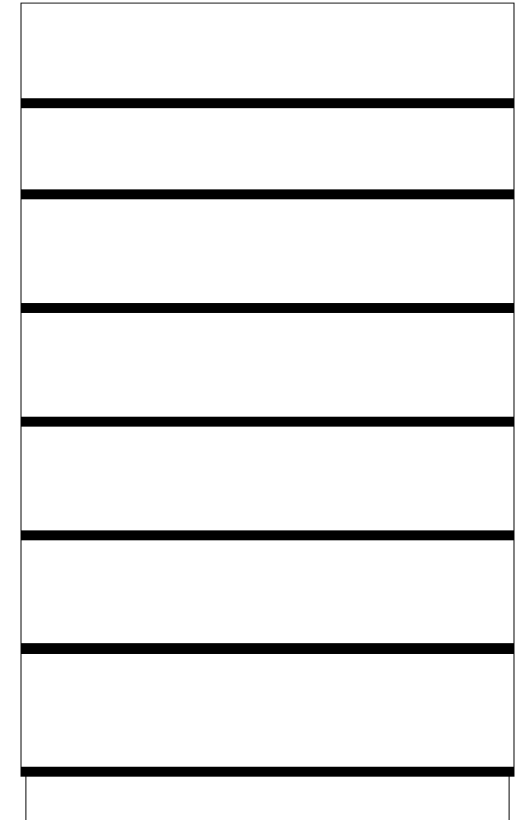
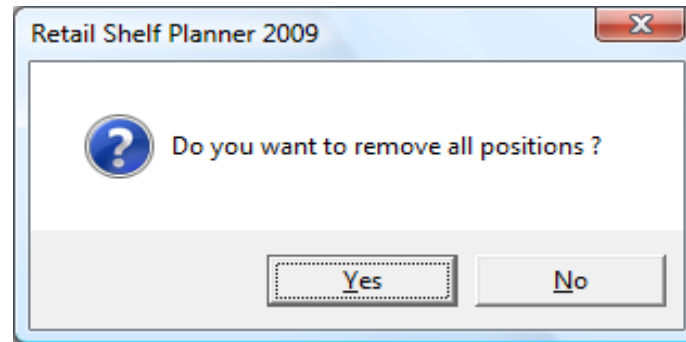
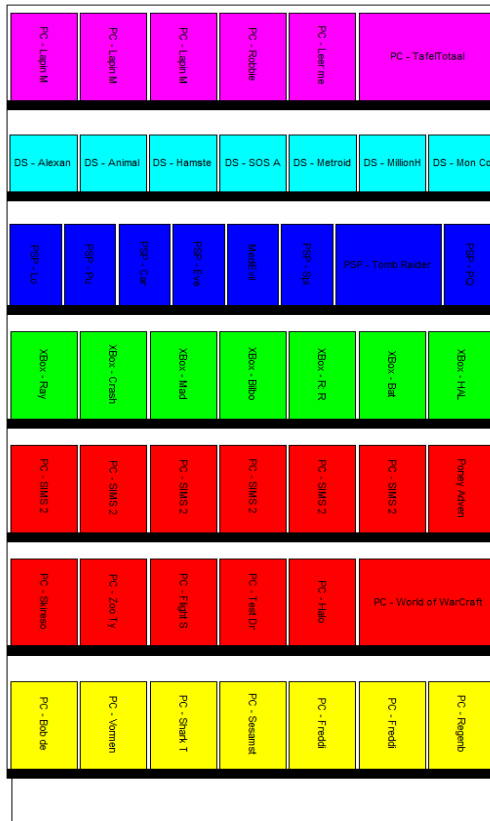
Flip the Planogram

- If you want to accommodate for a different traffic flow, you can quickly flip the planogram horizontally



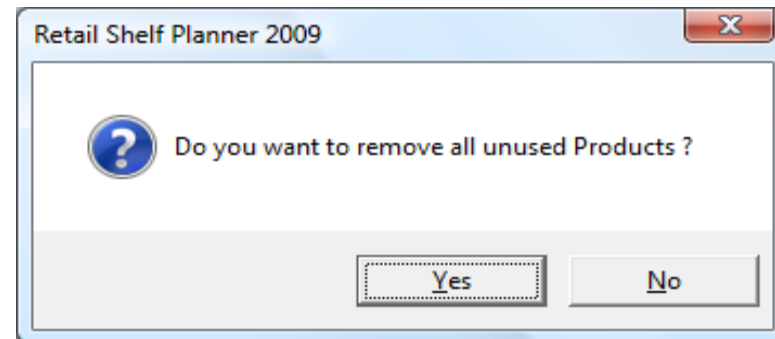
Remove All Positions

- If you want to re-use a section and shelves, but not the existing layout, use Remove All Positions



Remove Unused Products

- Once planogram is ready
 - Remove unused products to
 - Reduce size of file
 - Speed up calculations
 - Avoid “dirty” reports & analyses



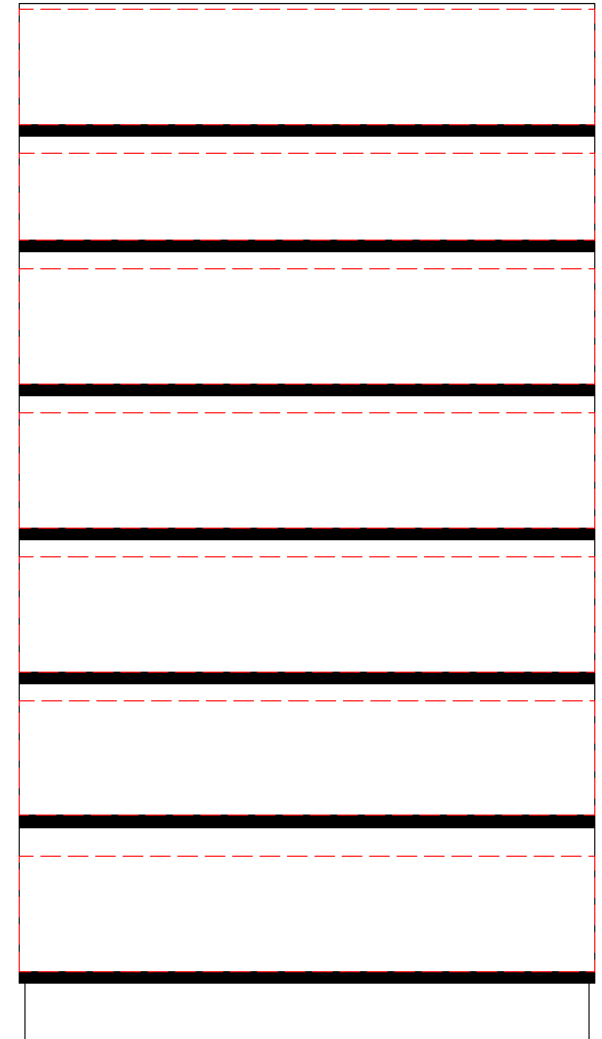
Section 2.

IMPROVING PLANOGRAM QUALITY



View Merchandising Areas

- In the View-menu you can switch on the display of Merchandising Areas.
 - Quick visual check of available space



Show Merchandising Errors

- Ensure that your planogram works in reality
 - Do products fit on the shelves ?!

